



Henry lighting Co.,Ltd

Address: ShiFeng Industrial Park, Tianyuan Road,
SongGang street,Baoan district, Shenzhen, China
Email: mikezhang@henry-lighting.com;
Mobile/Whatsapp/wechat/skype:86 15817520819



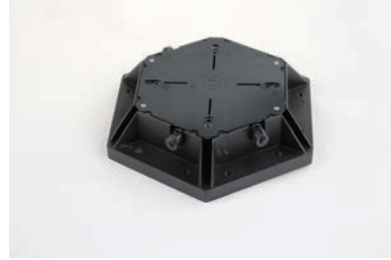
LED Honeycomb Module

Industrial lighting Solution

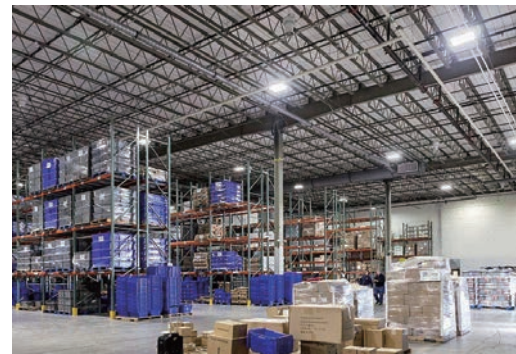
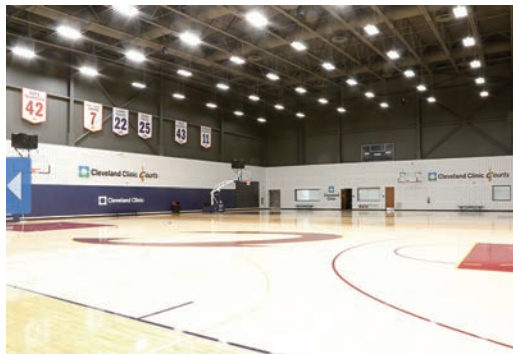
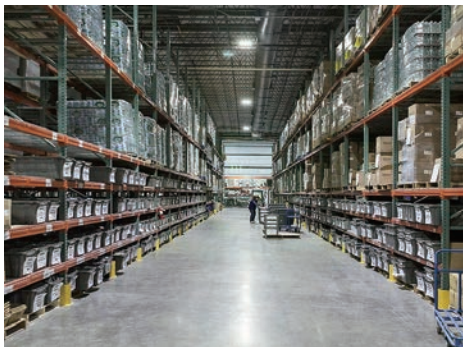
LED Honeycomb Module

Industrial lighting Solution

- Industrial Design
- Simple Connection Method
- High Performance
- Optical Lens: 17 °45° 90 °120 °120°(street light) for selection
- Heat Sink: Aluminium purity 99.3%
- IP67 Graded
- Smart Control System



Application



Honeycomb VS Traditional LED High Bay Light

Honeycomb LED High Bay Light 150W

LUMINAIRE PHOTOMETRIC TEST REPORT

Test : U: 221. 2V I : 0. 7050A P: 152. 2W PF: 0. 9760 Lamp Flux: 19641. 8x1 lm		
NAME: HO-HC-150	TYPE: LED	WEIGHT:
DIM : 420*430MM		
MFR : Shenzhen Sun-Light Technology Co., Ltd.		
DATA OF LAMP	PHOTOMETRIC DATA	Eff : 129. 05 lm/W



UFO LED High Bay Light 150W

LUMINAIRE PHOTOMETRIC TEST REPORT

Test:U:229. 9V I:0. 6907A P:154. 3W PF:0. 9719 Lamp Flux: 18593. 15x1lm		
NAME: High bay 90DEG	TYPE: 150W	WEIGHT:
SPEC. : 5000K/Ra70	DIM. : 0. 38*0. 38	SERIAL No. :
MFR. :	SUR. : 0. 115*0. 115	Shielding Angle:
DATA OF LAMP	PHOTOMETRIC DATA	Eff: 120. 5 lm/W



LED High Bay Light 200W

LUMINAIRE PHOTOMETRIC TEST REPORT

Test:U:220. 2V I:0. 9035A P:196. 6W PF:0. 9886 Lamp Flux:14598x1 lm		
NAME: -----	TYPE: LED HIGH BAY LIGHT	WEIGHT: 10. 5kg±0. 4kg
DIM.: D400*H640	SPEC.: 40W*4	SERIAL No.: HB200_B_90
MFR.: OTHER COMPANY	SUR.: 0. 025	PROTECTION ANGLE: 44
DATA OF LAMP	PHOTOMETRIC DATA	Eff: 74. 24 lm/W



We use 336 pcs 1W LED chips to make a 200W high bay. So it does great help for the lumen output. Because the more LEDs for a certain wattage, the less driving current is for each LED chip and easy for heat dissipation.

*Above honeycomb photometric test report is using chip of philips, we also offer Nichia chip for choosing.

LED Honeycomb Module

Spot High Bay Light Series

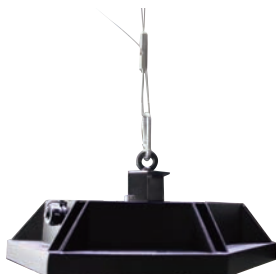


Use 1-10m Driver cable to connect Modules together and place the driver on back one module in the center module or mounted on the wall directly!
NEW Novel Spot Highbay is coming!!!

Honeycomb Module Range

Specification		
Model NO.	HO-HC-30	HO-HC-50
Power	30W	50W
1w LED Lumen	> 130 lm/W	> 130 lm/W
Lumen	> 3,900	> 6,500
Color Temperature	2700-7000K, RGB	
CRI	> 80	
Beam Angle	17° , 45° , 90° , ° 120°	
lifespan	50,000hrs	
Input Voltage	100-240VAC / 100-277VAC	
Frequency Range	50/60Hz (47~63Hz)	
Storage Temperature	-20° C~ 40° C	
Lamp Size	240x208x50mm	240x 208x50mm
Weight	< 1.4Kg	< 1.4Kg
Material	Pure Aluminum	
Lens Cover	PC	
Surface treatment	Powder Coating	
IP Grade	IP67	
Mounting Method	Bracket or Hanging Wire	

Mounting Method Industrial lighting Solution



Hanging Wire

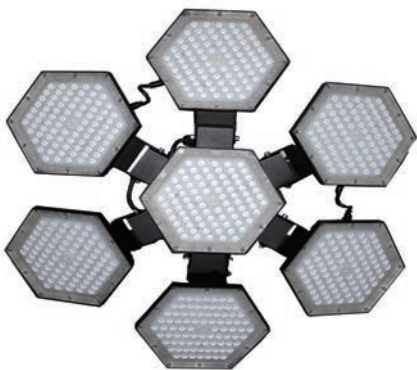


LED Honeycomb Module

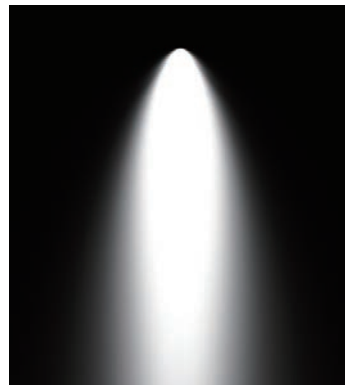
The LED Light of Adjustable Beam Angle Series



The LED light of adjustable beam angle series. For this adjustable type you can get best average illumination on the floor surface and reduce the quantity of light in the range of effective illumination.



Beam Angle 4 different optical lens



Assembly Shape

Industrial lighting Solution

High Bay Light



Flood Light



Street Light



Linear Light

